



*chichi*  
**kawa**  
**Men's**  
**Beauty**  
**Products**

Genderless  
cosmetics -  
the bight  
future of  
beauty

JULY 2021

MENS SKINCARE





## **Photo Front Cover**

[Lucas Souza - Pexels](#)

### **04 Photo**

[Ron Lach from Pexels](#)

### **05 Photo Genderless Cosmetics**

[Anna Shvets - Pexels](#)

### **06 THE ESSENTIALS**

Men's Skincare

### **08 ACNE PRONE SKIN**

### **14 OILY SKIN**

Pores + Blackheads

### **21 SENSITIVE SKIN**

Visible Redness

### **26 FINE LINES + WRINKLES**

Anti-ageing

### **34 UNEVEN SKIN TONE**

Dark Spots

### **42 DRY SKIN**

### **45 GENDERLESS COSMETICS**

**» Book Appointment**





*Mens'*  
**Beauty**





MAKE UP IS  
GENDERLESS

+

# Genderless *Cosmetics*





# The Best Skincare Products for Every Skin Type

**Your skincare routine can be as complicated as you want it to be, but there is a basic routine that every man should follow at the very least (to maintain a clearer, healthier and more youthful complexion).**

To begin, there are fundamental steps such as cleaning, moisturising, and exfoliating. However, the greatest men's skincare regimen—and the most streamlined one—takes this a step further by including additional critical tasks without overwhelming your sink ledge.

This men's skincare routine is universal, with minor differences for men with dry or ageing skin versus men with oily or acne-prone skin. (Those who are prone to dark spots, wrinkles, fine lines, and other signs of ageing are considered to be ageing.)

An excellent men's skincare programme should be easy to follow. The products utilised are determined by the age and skin type of each individual. They should be drier for younger men with oily skin and moisturising for older men or individuals with dry skin.





**"The essential men's skincare steps are listed here, along with our top products for each skin type."**

---

*Audrey Anderson*

There are advantages to targeting issues with ingredients and formulations designed specifically for your skin type, from fine lines to sun damage, redness, and roughness. An ideal regimen should include a cleanser, exfoliator, serum, lotion, and sunscreen, as well as conventional grooming necessities, including after-shave balm.

But, if you're ready for a full routine or just want something quick and easy, these are the best men's skincare buys to get you started.



# Acne-Prone Skin

## Men's Skincare Products

UNBLEMISH REFINING ACNE  
WASH \$45.00 | \$40.00 with PC  
PERKS

### **Why Do You Need It:**

With our easy four-step UNBLEMISH Regimen, you can achieve clean, healthy-looking skin while battling the signs of ageing.

Combating your skins breakouts, our formulations include Salicylic Acid and Colloidal Sulfur. Hyaluronic Acid, ceramides, and natural extracts are also included to help moisturised, soothed your skin.

This assists your skin in remaining youthful and firm. Our translucent, wide spectrum UV defence provides an invisible matte finish on all skin tones and can be used to prime the skin for cosmetics. With consistent, everyday usage, you can gain faith in your skin.

Wash away the blemishes. Gentle exfoliating beads remove blemishes and unclog pores while nourishing skin for smoother, brighter-looking skin.

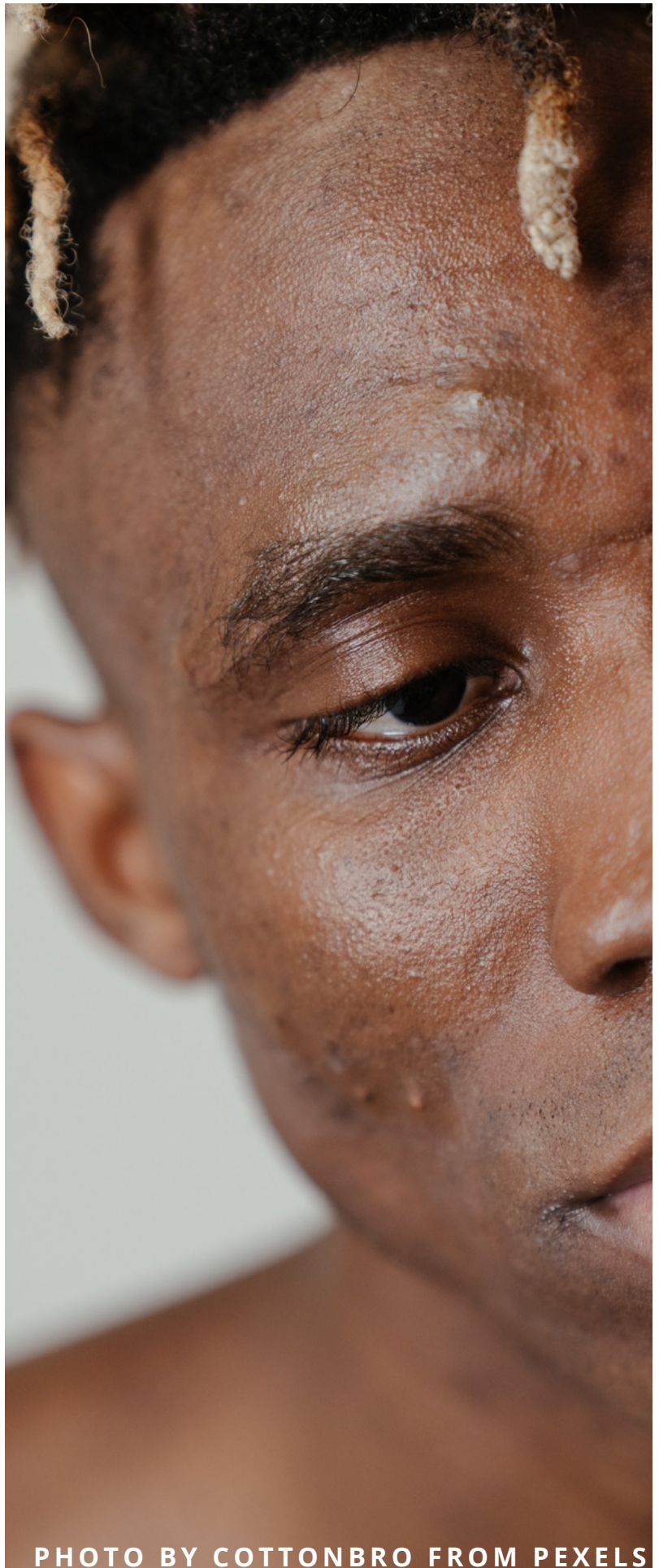


PHOTO BY COTTONBRO FROM PEXELS





UNBLEMISH REGIMEN  
STUDY PARTICIPANT



## WHAT IS IT?

With our gentle, creamy cleanser formulated with Salicylic Acid and Colloidal Sulfur, you can clear clogged pores as well as remove excess oil, facial makeup, and impurities.

125 mL / 4.2 Fl. Oz. in the US.

Typical Usage: Twice daily, in the morning and evening.

### PRIMARY BENEFITS:

Removes extra oil, makeup, and impurities that cause clogged pores and inflammation.

### CONCERNS ABOUT THE SKIN:

Adult acne and blemishes, oiliness, uneven tone and texture

### HOW TO APPLY

Use the UNBLEMISH Refining Acne Wash twice a day, in the morning and at night, avoiding the eye region. Follow the ramp-up instructions in the brochure.

1. Wet your skin and apply a dime-sized amount evenly to your face for 30-60 seconds.
2. Thoroughly rinse and pat dry.

### Patented Technology +

#### Key Ingredients:

Salicylic Acid: exfoliates dead skin and clears clogged pores.

Colloidal Sulfur: balances sebum overproduction, which causes clogged pores, breakouts, and inflammation.

### TONER FOR BLEMISH CLARIFICATION

\$50.00 | \$45.00 when combined with PC PERKS

#### Actual Outcomes Clarifying Toner for Blemishes

A clarifying face toner designed especially for adult skin with Acne and clear ageing signs. Clarifying toner will assist in exfoliating, calming, and soothing your acne-prone adult skin by removing dead skin cells, allowing pores to clear and skin tone to brighten.

Allow your pores to breathe. This toner contains gentle Alpha-Hydroxy Acids that help open and unclog pores while also brightening, relaxing, and firming the skin.

125 mL / 4.2 Fl. Oz. in the US.

1-2 times a day is a typical dose.



# HOW TO APPLY TONER

---

## HOW TO CHOOSE

Once a day, use the UNBLEMISH Clarifying Toner, avoiding the eye region. As tolerated, increase to twice daily in the AM and PM.

1. Using a clean gauze pad, apply toner to your face.
2. Avoid rinsing and allowing it to dry.

**PRIMARY BENEFITS:** Exfoliates, soothes, and calms acne-prone skin while also clearing pores and brightening colour.

**CONCERNS ABOUT THE SKIN:** Adult acne and blemishes, oiliness, uneven tone and texture Pores that are clogged and swollen; blackheads are a form of Acne. Key Technology + Proprietary Technology

The following ingredients are used: Alpha-hydroxy Acids (AHAs): gently exfoliate dead skin.

Hyaluronic Acid hydrates and clearly firms the skin.

Green Tea and Aloe Vera Extracts: soothe and relax the skin.

### **DUAL INTENSIVE ACNE TREATMENT TO REMOVE BLEMISHES**

**\$105.00 | \$94.00 when you use PC PERKS**

#### Actual Outcomes

A potent treatment designed especially for adult skin with Acne and visible signs of ageing helps clear skin, hydrate, and plump visibly. This clarifying acne treatment penetrates clogged pores to help clear your Acne and prevent new breakouts while nourishing, hydrating and noticeably firming for clear, youthful-looking skin.

This dual-chamber system penetrates the pores with 2.5 per cent Benzoyl Peroxide to help clear and avoid blemishes while hydrating and noticeably plumping skin.

2 x 22.5 mL / 0.76 Fl. Oz. U.S.

1-2 times a day is a typical dose.





# HOW TO APPLY DUAL INTENSIVE ACNE TREATMENT

---

Begin using the UNBLEMISH Dual Intensive Acne Treatment with one application per day, avoiding the eye area. Increase to twice daily as required or as instructed by a doctor .

1. Thoroughly cleanse the skin.
2. From each chamber, dispense 1-2 pumps.
3. Combine formulas and apply uniformly to the forehead.
4. Avoid rinsing.

If dryness or peeling occurs, minimise an application once a day or once every other day and follow a facial moisturiser. If pain or sensitivity occurs, discontinue use and consult your doctor.

**PRIMARY BENEFITS:** Clears Acne and prevents breakouts by penetrating clogged pores, hydrating, and noticeably firming skin.

**CONCERNS ABOUT THE SKIN:** Adult acne and blemishes, slickness, Inconsistent sound and texture, Pores that are clogged and swollen, Blackheads are a form of Acne.

**Patented Technology + Key Ingredients:**  
2.5 percentage points Benzoyl Peroxide: removes existing blemishes while preventing the formation of new blemishes.

**Pomegranate and Chamomile Extract:** Helps to reduce noticeable redness.  
**Ceramides** condition, hydrate, and plump the skin noticeably.



# MATTE PROTECTION

**WITHOUT  
BLEMISHES  
SPF 30**

\$40.00 | \$36.00 when you use PC  
PERKS

#### **What Is It?**

Our weightless, transparent formula protects skin from UV rays that amplify acne scars and ageing without clogging pores. Our silky SPF is invisible on all skin tones and applies smooth and dry to the touch without leaving any noticeable residue. (30 mL / 1 Fl. Oz. in the US.)

#### **Why Do You Need It:**

With our easy four-step UNBLEMISH Regimen, you can achieve clean, healthy-looking skin while battling the signs of ageing. To combat breakouts, our formulations include Salicylic Acid and Colloidal Sulfur.

Hyaluronic Acid, ceramides, and natural extracts are also included for moisturised, soothed skin that looks youthful and elevated. Our translucent, wide spectrum UV defence provides an invisible matte finish on all skin tones and can be used to prime the skin for cosmetics. With consistent, everyday usage, you can gain faith in your skin.

Holding excess oil and shine to a minimum. This mattifying lotion controls shine while protecting against UV rays, which accentuate the appearance of acne scars.  
Size: 30 mL / 1 FL. OZ.

Typical Usage: Once a day, in the morning.





**"TO KEEP THE BODY IN  
GOOD HEALTH IS A  
DUTY...OTHERWISE WE  
SHALL NOT BE ABLE TO  
KEEP OUR MIND  
STRONG AND CLEAR."**

**BUDDHA**

**PHOTO BY YOGENDRA  
SINGH FROM PEXELS**

# Oily Skin - Pores and Blackheads

## The Most useful Men's Skincare Products

**POWER UP RECHARGE SPECIAL**  
**With PC PERKS, \$342.00 | \$307.00**

Clear your pores and notice healthier-looking skin. Our RECHARGE Regimen and Pore Cleansing MD System power combination balances boost and defends against stressors for a healthy glow while deep cleaning pores and removing blackheads.

### **What Is It?**

A Multi-Med Therapy Regimen + Pore Cleaning MD System helps strengthen the skin's natural defences while thoroughly cleansing pores and eliminating blackheads.

With our Pore Cleansing MD System, you can get professional-quality pore extraction from the comfort of your own home, and our RECHARGE Regimen will show noticeably healthier-looking skin.







# THE RECHARGE POWER UP SPECIAL INCLUDES THE FOLLOWING ITEMS:

- **Pore Prep Solution** (30 mL / 1.0 oz US)

Gel serum dissolves pore-clogging dead skin cells, as well as accumulated oil and debris.

- **MD Pore Cleansing Tool**

A powerful pore extraction tool with two suction levels for a tailored clean.

- **Pore Cleaning Tips** (4 disposable tips)

Cleaning tip for removing dead skin cells, excess oil, and debris from the T-zone

- **Tips for Removing Blackheads** (4 disposable tips)

A blackhead-targeting tip with a dual-force, spring-action mechanism for extracting individual blackheads.

- **Power Adapter & Charging Cable**

Accessory Kit for the Pore Cleansing MD Tool

- **RECHARGE 3-in-1 Super Cleanser (125 mL / 4.2 Fl. Oz. in the US.)**

Daily cleanser and exfoliator gently lather to remove makeup, dirt, oil, sweat, and waste from pores.

- **RECHARGE Ultra Boost Moisturizing Treatment (50 mL / 1.69 oz the US)**

Weightless, fast-absorbing gel cream that helps restore skin moisture while also protecting against noticeable signs of stress.

- **RECHARGE Protect and Blur Broad Spectrum SPF 30 Sunscreen (40 mL / 1.35 oz. the US)**

Sunscreen with 100 per cent mineral UVA/UVB protection and the ability to blur imperfections for a flawless, poreless-looking matte finish.



## WHY DO YOU NEED IT?

Environmental aggressors such as stress, diet, lack of sleep, and pollution, as well as clogged pores and blackheads, can deplete the skin's healthy-looking glow. The RECHARGE Power Up Special, on the other hand, noticeably improves stressed skin while deep cleaning pores to help you achieve and sustain cleaner, healthier-looking skin.

Age, stress, and environmental aggressors all contribute to tired-looking skin. Clogged pores occur when excess fluid, dirt, and dead skin cells accumulate, when your clogged pores are exposed to air, blackheads form.

These skin issues are widespread and affect many teenagers and young adults of all skin types, genders, and ethnicities. However, the **RECHARGE Power Up Special** addresses all of them.





**KEY BENEFITS:** Extracts clogged pores, breaks down dead skin cells and built-up oil and combats tired-looking skin caused by age, tension, and environmental aggressors.

**Step 1:** is this cleanser.

3-in-1 Super Cleanser

RECHARGE

Using AM and PM.

1. Wet your fingers and apply a thin, even layer of product to your entire face.

2. Thoroughly rinse with water and pat off.

**Step 2:** Apply a moisturiser.

Ultra Boost Moisturizing

Treatment RECHARGE

Using AM and PM.

1. Using your hands, massage 2–3 pumps onto your face until absorbed.

2. There is no need to rinse.

**Step 3:** Apply sunscreen in the morning.

RECHARGE SPF 30 Broad

Spectrum Protect + Blur

Sunscreen

Apply in the morning and/or 15 minutes before sun exposure.

1. Apply a dime-sized volume evenly to your face and hands, blending outward.

2. At least every 2 hours, reapply. When swimming or sweating, use a water-resistant sunscreen.

3. SKIN CONCERNS: Clogged pores and blackheads, rough texture, oily skin, breakouts

# HOW TO USE - PORE CLEANSING MD SYSTEM

---

On clean skin, use the Pore Cleansing MD System once a week in the evening. Your evening Regimen should follow the extraction process.

**Step 1:** Preparing the Skin  
Pore Preparation Method

1. Using a gauze pad, saturate it with Pore Prep Solution.
2. Use it on your T-zone (forehead, nose and chin).

**Step 2:** Cleanse the pores  
MD Tool for Pore Cleansing +  
Pore Cleansing Tip

1. In the Pore Cleansing MD Tool, insert the Pore Cleansing Tip.
2. Start at the lowest suction level by pressing the tool's power button at the bottom (press the button again to increase power as needed).
3. Using horizontal strokes, glide the tip over the forehead and chin.
4. Using vertical strokes, move the tip downward from the inner brow region to the tip of the nose.
5. To break the suction, gently roll the tip-off at an angle rather than pulling straight off the skin.





for blackheads

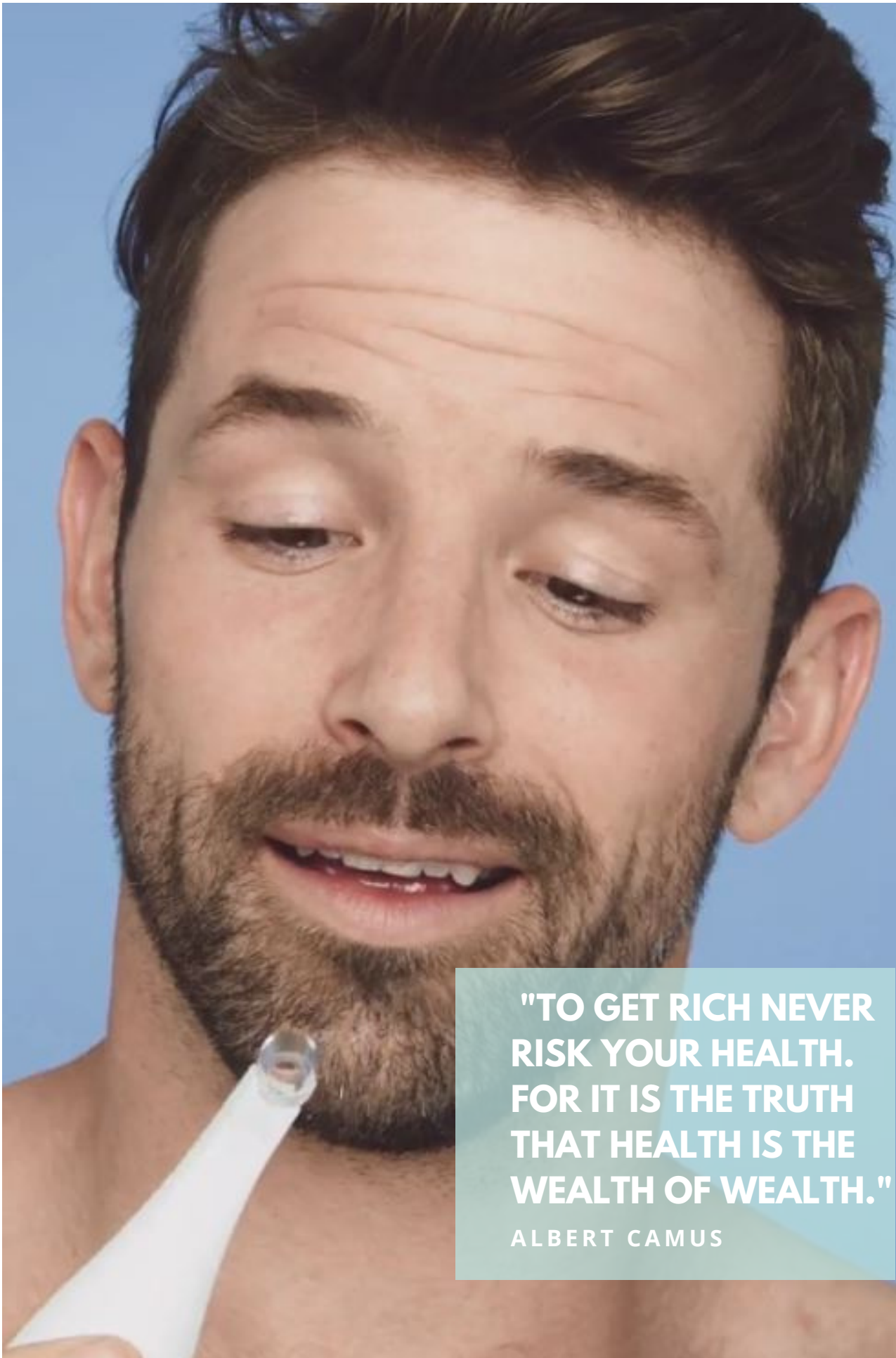


**Step 3:** Get Rid of Blackheads  
Blackhead Removal Tip + Pore  
Cleansing MD Tool

1. Apply the gauze pad to the blackhead removal area after saturating it with Pore Prep Solution.
2. In the Pore Cleansing MD Tool, insert the targeted Blackhead Removal Tip.
3. Start at the lowest suction level by pressing the tool's power button at the bottom (press the button again to increase power as needed).
4. By firmly pressing down on individual blackheads for 1–3 seconds, position the tip directly over the remaining blackheads.
5. To break the suction, gently roll the tip-off at an angle rather than pulling straight off the skin.

Warning: Avoid using this product on sensitive skin or on active acne lesions.

Use the RECHARGE Regimen twice daily, in the morning and evening, avoiding the eye area.



**"TO GET RICH NEVER  
RISK YOUR HEALTH.  
FOR IT IS THE TRUTH  
THAT HEALTH IS THE  
WEALTH OF WEALTH."**

ALBERT CAMUS





**SENSITIVE SKIN AND  
VISIBLE REDNESS**

**SOLUTIONS**

# SOOTHE FOR SENSITIVE SKIN



Keep Sensitive Skin at ease. This 4-step Regimen uses exclusive technology to improve skin's moisture barrier for healthier, more supple-looking skin over time, improving clear redness by 30% and drying time by 2x. Additionally, it soothes dry, itchy skin for a better night's sleep.





## **REGIMEN SOOTHE**

Save 20% off the combined retail value of \$235 (individual products sold separately). For example, the Regimen retails for \$185.

- **Why Do You Want This Sensitive Skin Care Routine?**

Our dry, irritated skin skincare routine provides the right ingredients, in the right formulations, layered on the skin in the right order for 24/7 protection against sensitivity, dryness, and irritation. Sensitive skin, like stressed skin, a weakened membrane, pH imbalances, and environmental attack, is soothed by proprietary RFP2 Peptide Technology and plant-inspired dermatological research.

The SOOTHE dry skin and eczema skincare routine address sensitive skin issues by including:

Use the SOOTHE Regimen for sensitive skin twice a day, in the morning and evening, avoiding the eye region.



- **SOOTHE Calming Gel Cleanser** (125 mL / 4.2 FL. Oz. US) is included in the SOOTHE Regimen.

Our soothing gel cleanser melts away makeup, dirt, and impurities gently. The non-foaming, soap- and fragrance-free formula cleanses without compromising the skin's natural barrier and soothes and relieves dry, itchy skin.

- **SOOTHE Sensitive Skin Treatment** (50 mL / 1.7 FL. Oz. in the US.)

This dry skin treatment provides temporary protection and relief for chapped or broken skin. It also aids in the relief of the drying effects of wind and cold weather.

- **SOOTHE Moisturizing Rescue Cream** (50 mL / 1.7 FL. Oz. in the US.)

This nourishing, rich cream is an integral part of any dry skin care routine, providing hydration and relief for a smooth, supple appearance. Non-comedogenic and fragrance-free.

- **SOOTHE Daily Mineral Sunscreen SPF 30** (30 mL / 1.0 FL. Oz.)

This light formula soothes, calms, and reduces the presence of overt redness. SOOTHE sunscreen protects skin from everyday environmental aggressors while also providing UVA/UVB protection. Non-comedogenic and fragrance-free.





---

88% HAD LESS VISIBLE  
REDNESS

- **Why Do You Need This Sensitive Skin Care Routine?**

Our dry, irritated skin skincare routine provides the right ingredients, in the right formulations, layered on the skin in the right order for 24/7 protection against sensitivity, dryness, and irritation. Sensitive skin, like stressed skin, a weakened membrane, pH imbalances, and environmental attack, is soothed by proprietary RFP2 Peptide Technology and plant-inspired dermatological research.

The SOOTHE dry skin and eczema skincare routine address sensitive skin issues by including:

Use the SOOTHE Regimen for sensitive skin twice a day, in the morning and evening, avoiding the eye region.

**Step 1:** Use Soothe Calming Gel Cleanser to cleanse your skin. Using AM and PM.

1. Dampen the skin and gently massage it all over the face, avoiding the eye region.
2. Thoroughly rinse and pat dry.

**Step 2:** Use SOOTHE Sensitive Skin Treatment to treat the skin. Using AM and PM.

1. Apply uniformly to the face, avoiding the eye area until it blends in. There is no need to rinse.
2. Reapply as needed during the day.

**Step 3:** Use SOOTHE Moisturizing Rescue Cream to hydrate.

Using AM + PM 1. Apply a thin layer evenly all over your face, avoiding the eye region.

**Step 4:** Apply SOOTHE Daily Mineral Sunscreen SPF 30 to your skin.

Use AM.

# FINE LINES + WRINKLES

SOLUTIONS





# REDEFINE

## REGIMEN

---

The REDEFINE Regimen targets all observable symptoms of ageing 24 hours a day, seven days a week. Now performs 3x better, 2x faster on wrinkles, and has even more advantages for visibly lifting, sculpting, and firming. In addition, our scientifically proven anti-ageing regimen reduces the occurrence of fine lines and deep wrinkles, irregular texture, loss of firmness, fullness and plumpness, and pores when tightening.

### REDEFINE REGIMEN

Saving 20% off combined retail value (individual items are also sold separately) of \$275. The regimen retail price is \$220.

\$220.00 | \$197.00 With PC PERKS

This powerful three-step Regimen blends Retinoid Science, Botanical Extracts, and exclusive Peptide Technology to visibly smooth lines and wrinkles, as well as raise, sculpt and define facial contours. Furthermore, the REDEFINE Regimen also includes a range of cleansers and AM/PM moisturisers tailored to your skin's needs – any combination produces the same results for the best skin yet.

# LOSS OF FIRMNESS + FACIAL CONTOUR



Our REDEFINE Regimen tackles all symptoms of ageing, including fine lines, deep wrinkles, irregular texture, loss of firmness, fullness, and plumpness while tightening pores. It is now 3x better, 2x faster on wrinkles, and has more benefits to visibly lift, sculpt, and firm.

During the day, your choice of lotion or cream reduces the appearance of lines and firms the skin with Peptide Technology and Botanical Grape and Beet Extracts. At night, our patented Peptide Technology clearly sculpts, lifts, and defines facial contours with your option of Retinal in the Lotion formula or Bakuchiol in the cream – our strong Retinoid Science refines when you sleep.

Now performs **3x better, 2x faster** on wrinkles, and has even more advantages for visibly lifting, sculpting, and firming. Our scientifically proven anti-ageing regimen reduces the occurrence of fine lines and deep wrinkles, irregular texture, loss of firmness, fullness and plumpness, and pores when tightening.

This powerful four-step Regimen blends Retinoid Science, Botanical Extracts, and exclusive Peptide Technology to visibly smooth lines and wrinkles, as well as raise, sculpt and define facial contours. Furthermore, the **REDEFINE Regimen** also includes a range of cleansers and AM/PM moisturisers tailored to your skin's needs – any combination produces the same results for the best skin yet.



# WHY DO YOU NEED IT?

**Key benefits:** Softens, exfoliates, and moisturises skin to reduce pores, smooth lines and wrinkles, and define facial contours for firmer, younger-looking skin.

**Skin Concerns:** Fine lines, deep wrinkles, loss of firmness, pore tightening, lifting, sculpting, defining

## It Is a Multi-Med Therapy. The Regimen

Multi-Med Therapy is the Dermatologist idea that using the right ingredients in the right formulations in the right order can be tailored to your skin's needs for better results than ever.





# INCLUDES THE FOLLOWING ITEMS:

The REDEFINE Regimen in Four Steps Included in the price is the choice of:

- REDEFINE Daily Clay Cleanser (125 mL / 4.2 Fl. Oz.)

2-in-1 cleanser + mask exfoliates, smooths, and eliminates everyday impurities such as dirt, grease, and makeup.

- REDEFINE Daily Foaming Cleanser (125 mL / 4.2 Fl. Oz.)

This creamy foaming cleanser lathers to leave skin smooth and supple as it removes everyday impurities like dirt, oil, and makeup.

- REDEFINE Pore Refining Toner (125 mL / 4.2 Fl. Oz. US)

Skin softening toner that minimises the presence of pores while also exfoliating to facilitate natural cell turnover.

- REDEFINE Triple Defense Cream SPF 30 (30 mL / 1.0 Fl. Oz. US.)

A medium-weight moisturising day cream + sunscreen nourishes skin while enhancing the appearance of fine lines, deep wrinkles, and firmness while protecting against harmful UV rays.

- REDEFINE Triple Protection Lotion SPF 30 (30 mL / 1.0 Fl. Oz. US.)

Lightweight moisturising lotion + sunscreen nourishes skin while enhancing the appearance of fine lines, deep wrinkles, and firms while protecting against UV rays.

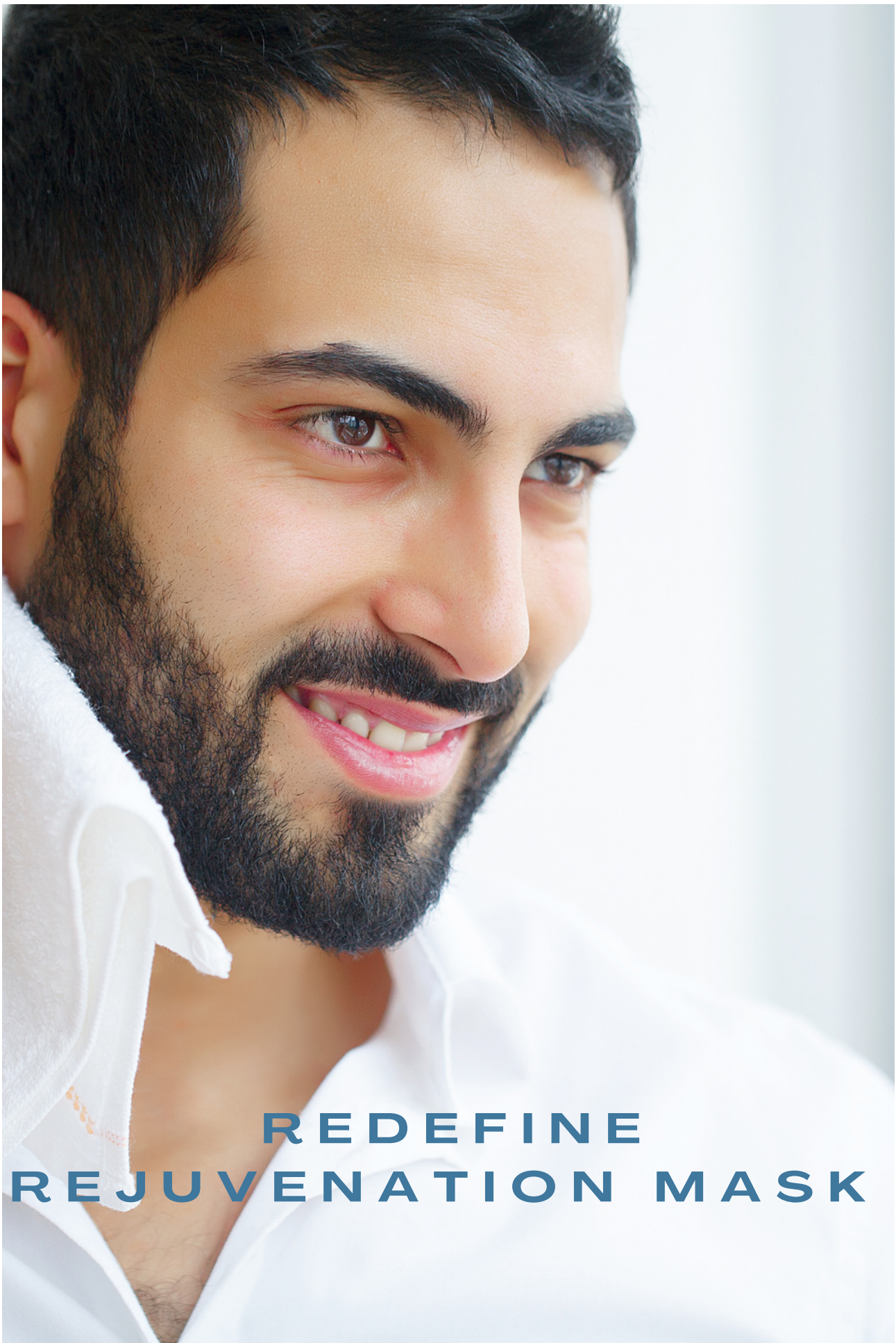
- REDEFINE Overnight Restorative Cream (30 mL / 1.0 Fl. Oz. US)

Rich, deep moisturising night cream strengthens fine lines and deep wrinkles while also lifting and sculpting to define facial contours for younger-looking skin.

- REDEFINE Overnight Reporative Lotion (30 mL / 1.0 Fl. Oz. in the US.)







**REDEFINE  
REJUVENATION MASK**



\$60.00 | \$54.00 by using PC PERKS

Remove the mask to reveal younger-looking eyes. A bubbling, hydrating gel with exfoliating Jojoba Beads refreshes and smooths skin while visibly improving fine lines and wrinkles over time.

50 mL / 1.69 FL. Oz. The US.

Typical Use: 2-3 days a week

**KEY BENEFITS:** Hydrates skin instantly and visibly smooths fine lines and wrinkles over time.

**SKIN CONCERNS:** Wrinkles and fine lines, loss of firmness, and dryness





## BENEFITS

**KEY BENEFITS:** Calms and decreases visible redness, as well as relieves dry, irritated skin.

**CONCERNS ABOUT THE SKIN:** Dryness, Irritation, Visible REDness, and Sensitivity

- RFp2 peptide technology, which is proprietary, reduces visible redness.
- OTC Colloidal Oatmeal provides temporary protection and relief for dry, itchy, eczema-prone skin.
- Patented RF3 Antioxidant Complex and Artichoke Leaf Extract fortify the skin's moisture barrier to protect against environmental aggressors.
- 7 ceramides hydrate and fortify the skin's natural moisture barrier.
- Cherimoya fruit extract soothes and balances irritated skin.



**UNEVEN TONE -DARK  
SPOTS**  
SOLUTIONS





# UNIQUE REVERSE AMP IT UP

---



Get a Regimen discount + a 20% discount on the AMP MD System. \$472 in total retail value (individual goods sold separately). The selling price of the bundle is \$376.

Retail \$376.00 | With PC Perks 10% discount

Reduce dullness and defy ageing. The AMPD MD System, a skin-transforming duo, enhances the anti-ageing properties of the REVERSE Regimen while significantly enhancing visible discolouration, dullness, and age spots for clearer, tighter, younger-looking skin.



What are the functions of the REVERSE Regimen + REDEFINE AMP MD System?

Increase the effectiveness of your skincare routine while saving 20% when you combine the REVERSE skincare routine for dull skin with the **REDEFINE AMP MD** System to enhance skin tone and texture visibly. The REVERSE AMP It Up Special incorporates the latest + enhanced REVERSE Regimen, which addresses and avoids further forms of visible discolouration as well as dark spots and dullness, with the REDEFINE AMP MD skin-revitalising device to help maximise performance.



ADDRESSES  
DISCOLOURA  
TION AS  
WELL AS  
DARK SPOTS  
AND  
~~DULLNESS~~

- REVERSE Deep Exfoliating Cleanser (125 mL / 4.2 Fl. Oz. US) is included in the REVERSE AMP It Up Special. It is a cleanser that buffs and micro-refinishes the skin's surface for a more radiant look, making it your ideal first step in your skincare routine for brighter skin. In addition, physical and chemical exfoliants extract dark, pigmented surface cells, exposing younger-looking skin and a smoother complexion of a more uniform texture.

- REVERSE Intensive Brightening Toner (125 mL / 4.2 Fl. Oz. in the US.) This skin-softening and brightening toner reduce clear discoloration for a radiant, luminous complexion. A gentle but intensely active skin prep solution targets skin discoloration, softens the appearance of dark spots, and boosts the effectiveness of the subsequent measures.

- REVERSE Tone Correcting Treatment (30 mL / 1.0 Fl. Oz. in the US.) Our breakthrough nighttime skin discoloration treatment blends the brightening power of 10% stabilised Vitamin C with the revitalising power of powerful retinoids to visibly decongest irregular skin tone and diminish the appearance of dark and/or brown spots.

- SPF 50 REVERSE Brightening Defense Fluid Lotion (30 mL / 1.0 Fl. Oz. US) A lightweight lotion protecting your skin from environmental aggressors and harmful UVA/UVB rays can cause dullness, skin discoloration, and ageing signs. The SPF defence helps to avoid potential discoloration.





## What You Need to Know About This Brightening Skin Care Routine Bundle:

With the REVERSE AMP It Up Special, you'll get next-level performance. This system consists of a skin-brightening routine, a handheld micro-exfoliating method, and a potent serum that works with the skin's natural renewing mechanism to reveal a more youthful appearance. These potent solutions work in tandem to firm, smooth, and refine the skin.

Our **REVERSE Regimen** immediately brightens, removes more discoloration forms, and evens skin tone 4X faster. During the day, our proprietary RF3 Antioxidant Complex + Niacinamide minimise the appearance of discoloration and clearly even skin tone, while Licorice Extract soothes the skin.

In the Pm, 10% Vitamin C + Kojic Acid brighten skin tone and reduce clear discoloration, while Innovative Retinoid Technology revitalises skin texture for smoother, more radiant skin.

Use the REVERSE Brightening Regimen twice a day to avoid the eye area in the morning and evening. Next, use the AMP MD System three times a week on the face and/or neck, gradually increasing to nightly use as tolerated.





---

85% HAD LESS VISIBLE  
DARK SPOTS

Use the REVERSE Brightening Regimen twice a day to avoid the eye area in the morning and evening. Next, use the AMP MD System three times a week on the face and/or neck, gradually increasing to nightly use as tolerated.

- **Step 1: Cleanse** your system.  
Deep Exfoliating Cleanser  
REVERSE

Using AM and PM. For the first week, use once every other day. Then, as tolerated, increase to twice daily.

1. Damp skin.
2. Massage the face gently, avoiding the eye area.
3. Rinse well and pat dry.

- **Step 2: Tone REVERSE**

Intensive Brightening Toner  
(Step 2)

Using AM and PM. For the first week, use once every other day. As tolerated, increase to twice daily.

1. After shaving, apply with a gauze pad all over the face, avoiding the eye region.
2. Avoid rinsing. Allow air to dry.

- **Step 3: Apply REVERSE**

Brightening Defense Fluid  
Lotion SPF 50 in the morning.

AM 1 should be included. Applying liberally and evenly all over your face and neck after washing and toning. Avoid the region around the eyes.





## BRIGHTENING SKIN CARE ROUTINE BUNDLE:

---



- **Step 4: Apply REVERSE Brightening Defense Fluid Lotion SPF 50** in the morning.

AM 1 should be included. Applying liberally and evenly all over your face and neck after washing and toning. Avoid the region around the eyes.

- Avoid contact with fabrics that may turn yellow due to the use of this retinoid substance while using Intensive Renewing Serum.

# HOW TO USE - DERMA-ROLLER AMP MD

---



- **Derma-Roller AMP MD**

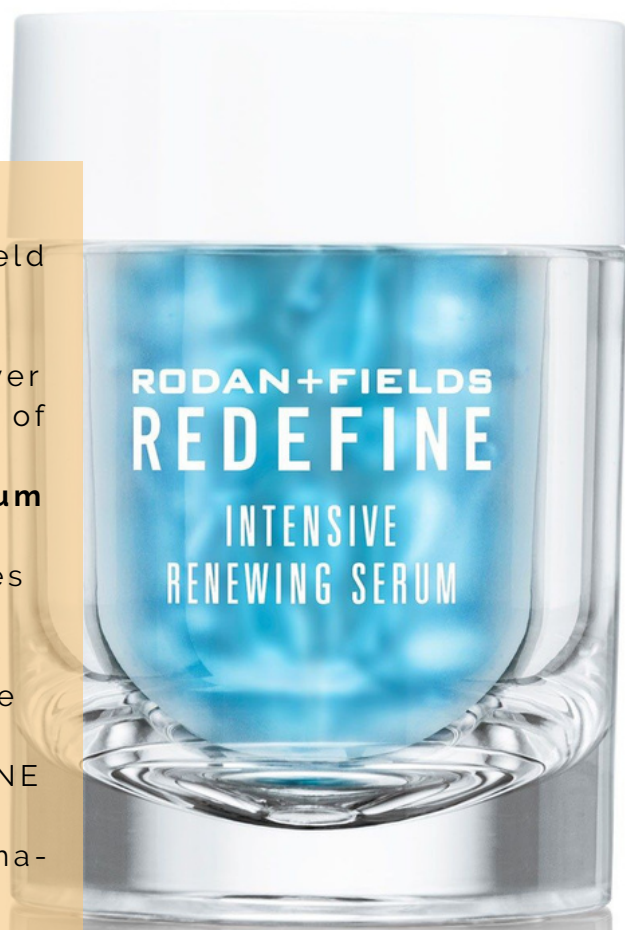
A pro skincare tool - handheld derma-roller with micro-exfoliating tips that conditions the skin's top layer and improves the efficiency of other items.

- **REDEFINE Renewing Serum Intensive** (60 capsules)

A nighttime serum stimulates the skin's natural renewal process, revealing younger-looking skin with less visible lines and wrinkles.

Purification Tablets REDEFINE AMP MD (16 tablets)

A two-month supply of derma-roller cleaning tablets.





# UNIQUE REVERSE AMP IT UP

---



## PM Derma-Roller AMP MD Derma-Roller at 3 p.m.

1. Gently roll over skin 4–10 times, shifting direction with each pass (vertical, horizontal, diagonal). Before moving on to the next segment, concentrate on one region (forehead, left side, right side, jaw, neck). The total rolling time should not be more than one minute.
2. After each use, rinse the derma-roller under warm water.

Then, clean twice a week thoroughly with AMP MD Purification Tablets, using a fresh tablet each time.

**Step 4:** In the evening, apply to REDEFINE Intensive Renewing Serum.

1. Remove the capsule tail by twisting it off.
2. Apply serum to the whole face and neck. There is no need to rinse.

Avoid contact with fabrics that may turn yellow due to the use of this retinoid substance while using Intensive Renewing Serum.



**96%** reported  
an improvement in the  
appearance of skin tone

Based on an 8-week U.S. clinical and consumer study



DRY SKIN



CREATED BY THE DERM'S

### SKIN THAT IS DRY

Itchy, tight, and dry skin may be caused by environmental influences, hormones, and some products. Our targeted products **hydrate and protect against potential dryness**.

**ACTIVE HYDRATION SERUM** 4.9 out of 5 stars 3806 reviews  
\$112.00 | \$100.00 when combined with PC PERKS

Thirsty skin should be quenched. With our super hydrating serum, you can instantly increase hydration levels by 200 per cent and lock in moisture. Combine with every Regimen for even better performance.

Typical Use: Once daily, in the evening KEY BENEFITS: Increases hydration levels by 200 per cent and reduces moisture loss in the skin for all-day hydration

**SKIN CONCERNS:** Dry, dehydrated skin

# ACTIVE HYDRATION BODY REPLENISH

## DRY SKIN



\$66.00 | \$59.00 when you use PC PERKS

Hydration from head to toe. Get younger-looking, younger-acting skin with our groundbreaking body moisturiser, which hydrates quickly and continuously while preventing potential moisture loss.

200 mL / 6.76 Fl. Oz. The United States  
Typical Application: Regular

**Primary benefits:** Hydration instant and constant eliminates moisture loss and significantly softer, cleaner, and nourished skin.

**CONCERNS ABOUT THE SKIN:** Dry, rough, and un nourished skin



# MICRO-DERMABRASION PASTE

## DRY SKIN

---

\$83.00 | \$74.00 when you  
use PC PERKS

Discover why it's a fan favourite. After only one application, our sugar + salt scrub exfoliates away dull, dead cells, revealing cleaner, lighter, more vibrant skin.

1-3 days a week is typical to use.

**PRIMARY BENEFITS:**

Exfoliation and moisturisation of the skin

**SKIN Concerns:** Dullness, uneven skin tone, oiliness, dry and flaky skin





*Genderless,*

**COSMETICS**  
TINTED MOISTURISER



## **GENDERLESS COSMETICS - TINTED MOISTURISER WITH SUNPROTECTION**

RADIANT DEFENSE PERFECTING LIQUID BROAD-SPECTRUM SPF 30 -

### **What Is Sunscreen With Moisturiser?**

More than 7 out of 10 people think Radiant Defense is better than makeup\* 4-in-1 tinted moisturiser that looks like makeup but acts like skincare. Radiant Defense Perfecting Liquid SPF 30 delivers instant coverage and promotes naturally smoother + more radiant skin over time.





# The Best Tinted Moisturiser

## Use daily to:

- NEUTRALISE skin-dulling environmental aggressors
- REPAIR natural moisture barrier for smoother skin
- PROTECT against sun rays for healthier skin
- PERFECT complexion for instant glow

## Skin Concerns:

- Uneven skin tone
- Visible pores
- Visible redness
- Post-acne marks

**“Glowing skin is a result of proper skincare. It means you can wear less makeup and let skin shine through.” — Michael Coulombe**

# WHY YOU NEED THIS SUNSCREEN WITH MOISTURISER?

Traditional makeup, BB creams and tinted moisturisers can weigh skin down, causing dullness and breakouts. Unlike these products, Radiant Defense was developed with proprietary technology plus skin-loving antioxidants + ingredients, so it not only looks good on you, it's good for you. Choose from 10 flexible shades to enjoy the beauty with benefits. \*78% of our Preferred Customers surveyed prefer Radiant Defense to other tinted products.

\*For more information on our 60-day return policy, including terms and conditions, please see our Satisfaction Guarantee.





# DERMACOSMETICS SPF 30+++

**DERMACOSMETICS** is a term used to describe the science of cosmetics.

Our multitaskers have dermatologically influenced skincare advantages as well as instant complexion-perfecting results.

Perfection of complexion. This lightweight tinted moisturiser protects against environmental aggressors, repairs the skin's moisture barrier, and protects from UV rays while noticeably evening out tone and perfecting.

**KEY BENEFITS:** Provides instant coverage to minimise apparent redness and pores, while antioxidants and peptides neutralise environmental aggressors and provide sun safety.

**SKIN CONCERNS:** Inconsistent skin tone, visible pores, visible redness, and post-acne scarring



[SHOP NOW](#)



# How

## do you find your skin type?

### **SERVICE FOR PERSONALISED SKINCARE.**

Rodan + Fields operates with Independent Consultants who provide one-on-one advice. They have the expertise and resources to assist you in developing a solution to your skin problems and locating the appropriate R+F items for you.

### **WORKING TAILORED SOLUTIONS**

The Independent Consultants work hard to find the best products for your skin's needs and priorities using our patented Solution Tool. This is a quick, quick 5 min Quiz to come up with your skin concerns.

### **You are Supported along the way.**

Connecting with your Consultant via email, phone, or video chat for help on your road to life-changing results is simple and convenient.



*Find*  
**YOUR IDEAL  
SKIN  
SOLUTION**



*Skincare*

TAKE THE QUIZ



AUDREY ANDERSON

[www.audreyandersonworld.com](http://www.audreyandersonworld.com)

